

ENOCEAN

ENOCEAN SYSTEM FUNCTIONS

OPERATE ON BUTTONS

To control home automation, all four switching points can be individually configured via an EnOcean central unit or by manual assignment.



BATTERY-FREE

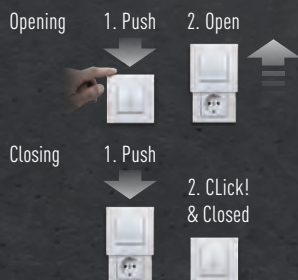
RADIO TECHNOLOGY

Each keystroke generates the radio transmission to the EnOcean system energy - without any batteries.

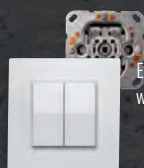


PUSH TO OPEN

The Hidden Socket | Versteckdose® with push-to-open opening support for the movable radio switch.



EnOcean Switch with mounting frame



EnOcean switch with cover frame



EnOcean Switch with connecting frame

PAGE 1



EnOcean switch with Hidden Socket | Versteckdose® for plug type F



EnOcean switch with Hidden Socket | Versteckdose® for plug type J



EnOcean switch with Hidden Socket | Versteckdose® for plug type E



EnOcean switch with Hidden Socket | Versteckdose® for plug type G



PAGE 2

SPECIFICATIONS

Friends of Hue switch

Power supply: battery-free, with integrated energy converter
 Frequency band: 868 MHz
 Radio range: 300 m free field, 30 m indoor
 Radio standard: EnOcean
 Functionality: 4 configurable switching points
 Lifetime: 100,000 clicks
 Commissioning: manually or with app
 (Android / iOS / Windows)

Frame

Material: plastic, alpine white glossy
 (RAL9010)



OPERATE ENOCEAN AT BUTTONS

Configuring button functions

The four switching points are individually configured via an EnOcean central gateway or by manual assignment via an EnOcean actuator to control home automation.

- On/Off switching
- Shading
- Smart Lighting
- Heating/ Climate



Control EnOcean actuators

The EnOcean switch of the Hidden Socket | Versteckdose® controls the actuators of any EnOcean system.

ENOCEAN RADIO SWITCH

WITH MOUNTING FRAME

Mounting on a flush-mounted box - in addition to simple adhesive mounting on suitable ground, also for screw mounting on a flush-mounted box, after removing a wired switch.

Simply a good switch with a flat wall mounting frame, for all applications where the combination with a socket is not important. The big advantage with this EnOcean wireless switch is its free placement. Because no matter where you need a place to switch, this switch can be placed anywhere with adhesive.

WITH COVER FRAME

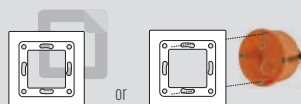
Surface mounting over an existing switch - without interfering with the electrical installation.

This switch with a mounting frame can be installed over an existing wired switch without having to intervene in the electrical installation. Only the plastic frame and the rocker elements of the existing switch are removed and only the switch insert is left in the flush-mounted box. This can then simply be covered with the cover frame and the radio switch. In this way, a EnOcean lamp can be switched and additionally controlled at the same switching location as before, without the need for an electrician for the conversion.

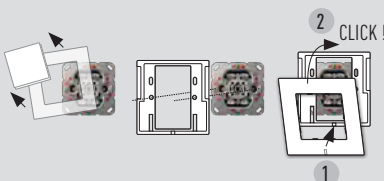
WITH CONNECTING FRAME

Mounting of a second switch below the Hidden Socket | Versteckdose® - as a switch with connecting frame to cover another flush-mounted box

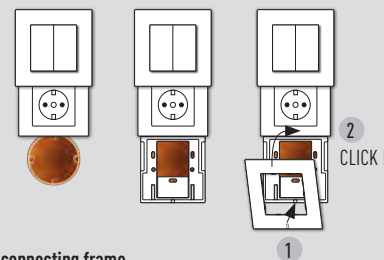
If a Hidden Socket | Versteckdose® is mounted on two flush-mounted boxes, this connecting frame with a EnOcean radio switch is used to cover the second flush-mounted box and to install a second radio switch. The connecting frame is precisely aligned and connected to the Hidden Socket | Versteckdose® by means of a plug-in connection. This makes it possible to convert a switch-socket installation, for example, to two EnOcean wireless switches arranged one below the other and a socket.



with mounting frame



with mounting frame

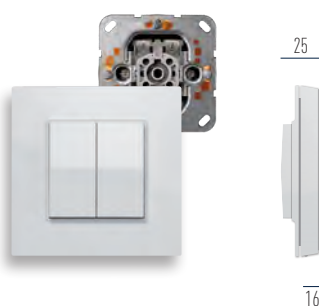
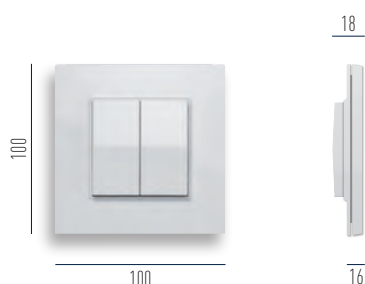


with connecting frame

Item no. RS07-04000000
 Switch with mounting frame

Item no. RS09-04000000
 Switch with mounting frame

Item no. RS10-04000000
 Switch with connecting frame



HIDDEN SOCKET | VERSTECKDOSE® – RETROFITTING AN EXISTING LIGHT SWITCH

Retrofit: Conversion of an existing light switch to a socket outlet

In order to be able to use the cables of an existing light switch for retrofitting an additional socket outlet, these two installation requirements must be met at the light switch to be replaced:

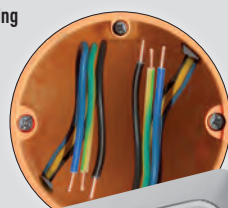
1. a flush-mounted socket with a depth of at least 47 mm
2. a form of wiring that is suitable for a protective contact socket.

1. flush-mounted box with min. 47 mm depth

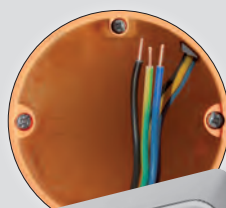


2. types of wiring

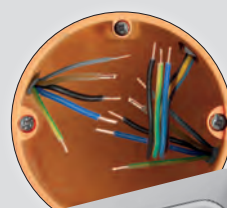
suitable



2 CABLES EACH WITH 3 - 5 WIRES
– CAN BE RETROFITTED
DIRECTLY!

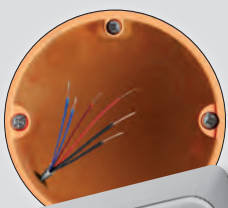


1 CABLE WITH 3 - 5 WIRES
– CAN BE RETROFITTED
WITH SMALL ADAPTATIONS.



> 2 CABLES EACH WITH 3 - 5 WIRES
– CAN BE RETROFITTED.
HOW? ASK YOUR ELECTRICIAN!

not suitable



DOORBELL WIRE INSTEAD OF POWER
CABLE – NOT SUITABLE FOR 230 V!



POWER CABLE WITH 2 WIRES –
PROTECTIVE CONDUCTOR MISSING!



Please note:
The installation requires
a qualified electrician!

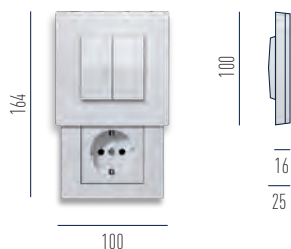
Find further informations on
installation requirements on:
www.hiddensocket.com/support

HIDDEN SOCKET | VERSTECKDOSE® WITH ENOCEAN RADIO SWITCH

HIDDEN SOCKET | VERSTECKDOSE® FOR PLUG TYPE F (DE)

Connected load: 220 - 250 V AC, 50 - 60 Hz, 16 A, Contact hazard protection: integrated intervention protection, Housing: plastic, alpine white (RAL9010) glossy, from AS series (Jung), Mounting: in flush-mounted box, Conforms to standard: DIN 49073 (60 mm opening, 46 mm depth), Degree of protection: IP20, for indoor use, Plug type: type F, with double earthing, Certificates: CE, RoHS, VDE0620-1, EN60950-1

Item no. VS02-04010000
Socket insert for plug type F (DE)



HIDDEN SOCKET | VERSTECKDOSE® FOR PLUG TYPE J (CH)

Connected load: 250 V AC, 50 - 60 Hz, 10 A, Contact hazard protection: integrated increased contact hazard protection, Enclosure: plastic, alpine white (RAL9010) glossy, from AS series (Fa. Jung), mounting: in device box according to DIN 49073, complete with support ring, for screw mounting (not suitable for mounting in surface-mounted caps), with spring terminals for conductors up to 2.5 qmm, conformity to standards: SEV 1011-1998/IEC 884-1, degree of protection: IP20, for indoor use, plug type: for type J, T13 with double earthing

Item no. VS02-04040000
Socket insert for plug type J (CH)



HIDDEN SOCKET | VERSTECKDOSE® FOR PLUG TYPE E (FR / BE)

Connected load: 250 V AC, 50 - 60 Hz, 16 A Degree of protection: IP20, for indoor use, Contact hazard protection: integrated increased contact hazard protection, Housing: plastic, alpine white (RAL9010) glossy, from series AS (Fa. Jung), Mounting: with spring terminals for rigid untreated flexible conductors up to 2.5 qmm, Conforms to standard: CEE-Publ. 7, Normblatt V, Plug type: type E, 2-pole with earth pin

Item no. VS02-04050000
Socket insert for plug type E (F / BE)



HIDDEN SOCKET | VERSTECKDOSE® FOR PLUG TYPE G (GB)

Connected load: 250 V AC, 50 - 60 Hz, 13 A, Contact hazard protection: integrated increased contact hazard protection, Housing: plastic, alpine white (RAL9010) glossy, from Series AS (Jung), Mounting: with screw terminals for rigid and flexible conductors up to 4 qmm acc. to BS 1363-1, Conforms to standard: British Standard 1363, Degree of protection: IP20, for indoor use, Plug type: type G, 2-pole with earth pin

Item no. VS02-04060000
Socket insert for plug type G (GB)

